



UNFPA and The Global Compact on Migration (GCM)

Fourth Arab Regional Consultative Process on Migration and Refugee Affairs (ARCP)

General Secretariat of the League of Arab States

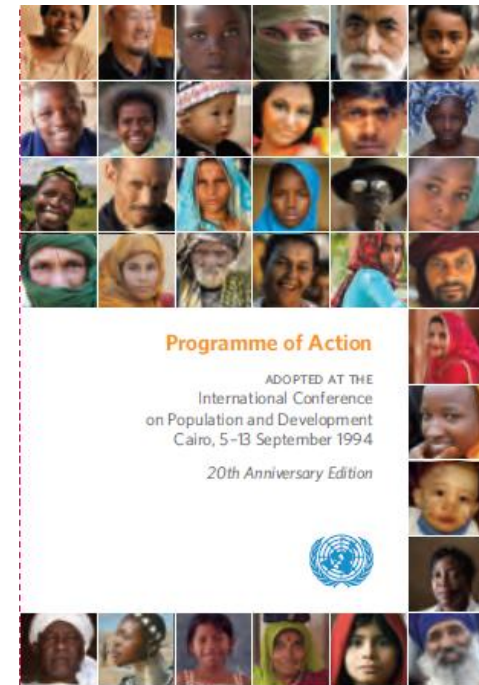
Cairo, 7-8 May 2018

We will highlight the following

- UNFPA and Migration
- Situation in the Arab World
- Zoom on challenges in the Arab World
- UNFPA major actions
- The way forward

UNFPA and Migration

- Since 1994, ICPD PoA
- Cairo declaration in 2013
- Relating to SDG 10.7 and GCM;
 - *migration as a choice needs to be safe and orderly* within countries of origin, transit and destination, to harness benefits and minimize challenges



UNFPA and migration; important figures

- Since 1990, the global number of international migrants has increased by 105 million, reaching 258 million in 2017
- 70% are between 20-59 years – working age
- 48% of international migrants are women
- 10% of migrants are in the Arab world



Situation in the Arab World

- At least six countries have displaced persons
- Future population growth will be primarily in urban areas
- Lack of proper policies in place
- Lack of adequate services for migrants and protection

Zoom in on challenges for the GCM in The Arab Region

- Migrants face during their journey: sexual, physical and psychological abuse, violence, and human trafficking
- Migration transforms traditional roles and social barriers, in particular for women and youth – gender issues come to the top
- Level of fertility is linked to development and gender equality

Demographic Dividend is possible if:

- more girls enter school and stay in school
- more young people join the workforce
- Policies are in place and investments are made to ensure education, health, and employment of young people

Data gaps

- Less than half the countries have institutions for data management of International migration, monitoring and evaluation and provide and publish data
- Internationally comparable **data, definitions and measures of cities and urban agglomerations**, needed for an integrated monitoring of SDGs
- Internationally **comparable data and measures of migration, including return and circular migration**, based on censuses, surveys, administrative records, and new sources of “big data”
- All this requires national and international **coordination and cooperation**



UNFPA major actions

- UNFPA's mandate focuses on:
 - rights of migrant women and girls; access to sexual and reproductive health services, gender equality, empowerment, and ending gender based violence and harmful practices
 - drivers of migration and the importance of the Demographic Dividend
 - migration data
- Youth migration Study in collaboration with Danish Refugee Council (DRC)
 - Three Arab cities
 - Investigates drivers of migration, experiences along the journey,
 - SRH services and needs, and required policy directions
- Capacity building on monitoring of SDGs through the focus on ICPD-based SDGs and use of multiple data sources in collaboration with ESCWA and ITRS
 - Census task force
 - Capacity building workshops
- Creating a policy dialogue with Population Councils and Data Managers from the Arab Region in collaboration with LAS





The Way Forward

UNFPA will continue to promote

- The human rights perspective regardless of the migration status, especially those of women and girls/children
- The provision of affordable and safe sexual and reproductive health services
- Mainstreaming the gender perspective, promote gender equality and the empowerment of all women and girls and fully respect and combat sexual and gender-based violence
- Condemning all harmful practices that affect women and girls, in particular female genital mutilation and child marriage



UNFPA continues to support

- The demographic dividend and invest in human capital development,
 - CSE
 - education and skills development;
 - employment and entrepreneurship, health and wellbeing,
 - as well as institutional coordination and infrastructure to allow for better FP and youth SRH services
- Addressing the needs of the rapidly growing number of older persons
- Generation of reliable, accurate, disaggregated, nationally relevant and internationally comparable **statistical data and indicators**
- Leveraging “big data” for measurements
- Enhancing capacities in coordination and cooperation



We are the partners

- At country level,
 - Parliamentarians
 - National Statistical Offices
 - National Councils for Population and Development
 - Ministries of migration, health, planning, youth
 - UNFPA country offices
- At regional level,
 - IOM, ESCWA, LAS, and other partners

Thank you

